

UniWine

For vineyard irrigation

- Turbonet® labyrinth assures wide water passage
- PC system for uniform flow rate from 0.5 - 4.0 bar
- Anti-siphon & self-flushing systems prevent dirt penetration and improve clogging resistance
- Root physical barrier improves resistance to clogging caused by root penetration
- Two purple strips for easy identification
- Pre-installed adjustable dripperline ring
 - Economical -save labor cost
 - Easily adjustable, preventing water migration



DRIPPERS TECHNICAL DATA

Flow rate (l/h)	working pressure range (bar)	water passage dimensions width-depth-length (mm)	filtration area (mm ²)	coefficient K	exponent*
1.0	0.5 - 4.0	0.83 x 0.74 x 40	130	1.0	0
1.6	0.5 - 4.0	1.26 x 0.70 x 40	130	1.6	0
2.3	0.5 - 4.0	1.26 x 1.00 x 40	130	2.3	0
3.5	0.5 - 4.0	1.59 x 1.15 x 40	150	3.5	0

* At working pressure range

DRIPPERLINE TECHNICAL DATA

Model	inside Ø (mm)	wall thickness (mm)	outside Ø (mm)	max. working pressure (bar)	KD
16012	13.70	1.2	16.10	4.0	1.6
16010	14.10	1.0	16.10	3.5	1.3

16012, 16010

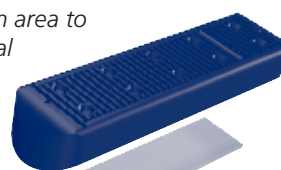
Anti-siphon

UniWine dripper

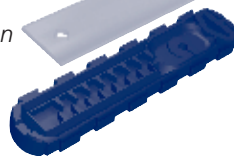


UniWine facets

Wide filtration area to ensure optimal performance even under harsh water conditions



Injected silicon diaphragm



Large, deep and wide cross-section improves clogging resistance



Root physical barrier – improves resistance to root penetration



PC system ensuring exact flow rate in all field conditions



Injection molded dripper construction, ensuring uniform drippers and very low CV



PRESSURE COMPENSATED DRIPPERLINES

UniWine 16012 • I.D. Ø 13.70 mm • Inlet pressure 3.0 bar

Max. lateral length (m)

spacing between drippers (m)

Nom. flow rate (l/h)	0.20	0.30	0.40	0.45	0.50	0.60	0.75	0.90	1.00	1.25	1.50
1.0	118	170	220	243	267	311	375	435	473	563	648
1.6	86	125	162	179	196	229	276	320	348	415	477
2.3	68	98	127	141	155	181	218	253	275	328	378
3.5	51	75	96	107	118	137	166	193	209	250	288

UniWine 16010 • I.D. Ø 14.10 mm • Inlet pressure 3.0 bar

Max. lateral length (m)

spacing between drippers (m)

Nom. flow rate (l/h)	0.20	0.30	0.40	0.45	0.50	0.60	0.75	0.90	1.00	1.25	1.50
1.0	129	186	240	266	290	338	405	469	509	604	693
1.6	95	137	176	195	214	248	299	346	375	445	512
2.3	75	108	139	154	168	196	236	273	296	353	405
3.5	57	82	106	117	128	149	179	208	226	269	308

Minimum pressure considered = 0.5 bar, calculated in a plain area

For more information, please contact Netafim Technical Department, or connect to our website at www.netafim.com

PERFORMANCE DATA



UniWine	Wall thickness (mm)	Coil length (m)	Distance between drippers (m)	Coil weight* (kg)	Coils in a 40 feet container (units)	Total in a 40 feet container (m)
16012	1.2	400	0.2 to 1.0	24 to 21	352	140800
16010	1.0	500	0.2 to 1.0	26 to 22	330	165000

* According to drippers spacing

PACKAGING DATA